



# GAT MONTHLY MEMBERSHIP PROGRESS REPORT

Results as of: 1/31/2022

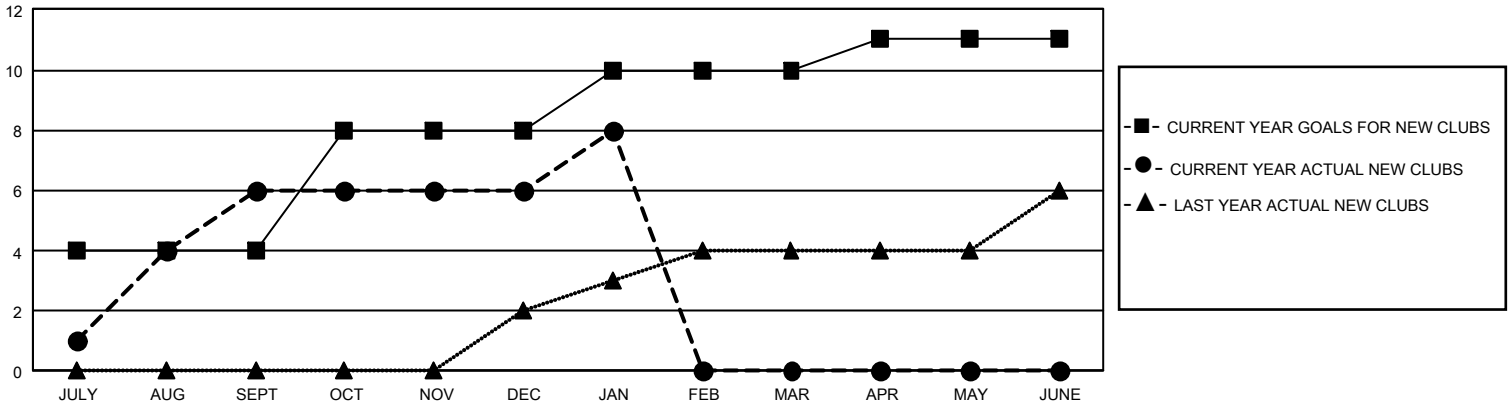
## GMT Constitutional Area 5 - E, Group P

REPORT DOES NOT INCLUDE CLUBS IN UNDISTRICTED AREAS.

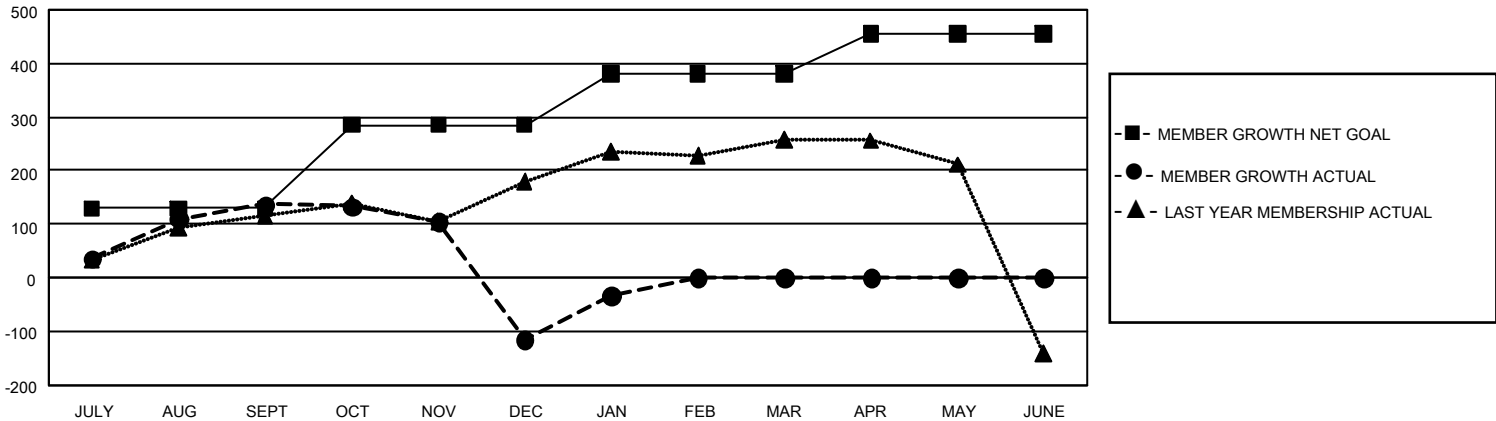
Clubs			
RESULTS FOR 2021-2022			
QUARTER	NEW CLUB GOAL	NEW CLUBS	DROPPED CLUBS
JULY/AUG/SEPT	12	6	1
OCT/NOV/DEC	12	0	2
JAN/FEB/MAR	6	2	1
APR/MAY/JUNE	3	0	0

Members			
RESULTS FOR 2021-2022			
QUARTER	MEMBER GROWTH NET GOAL	MEMBER GROWTH ACTUAL	DROPPED MEMBERS ACTUAL (including transfers)
JULY/AUG/SEPT	130	266	115
OCT/NOV/DEC	155	128	363
JAN/FEB/MAR	95	140	52
APR/MAY/JUNE	75	0	0

GOALS AND ACTUAL NEW CLUBS CUMULATIVE



GOALS AND ACTUAL MEMBERS CUMULATIVE



<b>DROPPED CLUBS: 4</b>	109 CLUBS OF 304 ADDED 1 OR MORE NEW MEMBERS	<b>GENDER DISTRIBUTION</b>	
		MALE 3,610 (50.43%) FEMALE 3,548 (49.57%) NON BINARY 0 (0.00%) PREFER NOT TO ANSWER 0 (0.00%)	
<b>DROPPED MEMBERS</b>		<a href="#">CLICK HERE FOR CUMULATIVE MEMBERSHIP DATA</a>	TOTAL FAMILY UNIT MEMBERS 504
DECEASED 29 CLUB CANCELLED 47 OTHER 454 <b>TOTAL 530</b>			FAMILY MEMBERS PAYING HALF DUES 273